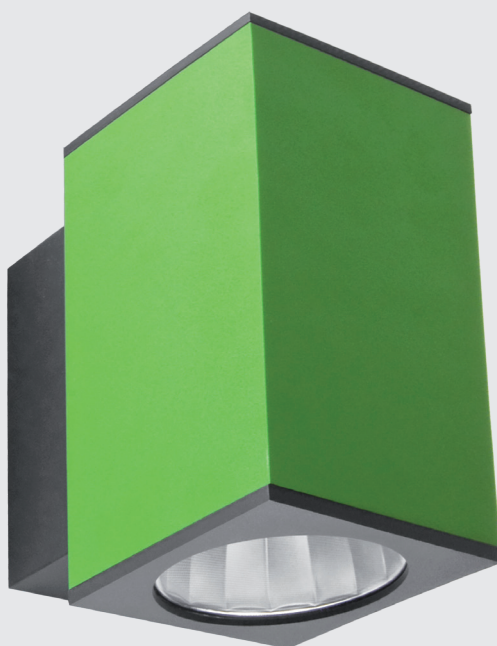


WALL LED SQ

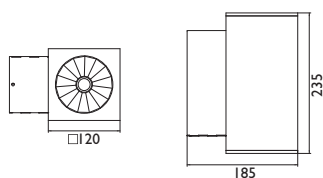


Wall mounted LED luminaire. Body is made of steel and aluminium profile. All RAL colours are available. Light source - Philips, Osram or Tridonic LED module. Standard EVG ballast, DALI or Touch Dali version on request.

High quality, energy efficient white LED light with CRI 80 and more.

Perfect replacement for conventional luminaires in:

- Offices
- Public buildings
- Hotel lobbies and receptions
- Retail



Index no.	Lumen output	Wattage	Colour temp.	Colour rendering index	Lifetime	Weight
003598.1100/827	1100 lm	9 W	2700 K	Ra > 80	50.000 h	2,94 kg
003598.1100/830	1100 lm	9 W	3000 K	Ra > 80	50.000 h	2,94 kg
003598.1100/840	1100 lm	8 W	4000 K	Ra > 80	50.000 h	2,94 kg
003598.2000/827	2000 lm	16 W	2700 K	Ra > 80	50.000 h	2,94 kg
003598.2000/830	2000 lm	15 W	3000 K	Ra > 80	50.000 h	2,94 kg
003598.2000/840	2000 lm	14 W	4000 K	Ra > 80	50.000 h	2,94 kg
003598.3000/827	3000 lm	24 W	2700 K	Ra > 80	50.000 h	2,94 kg
003598.3000/830	3000 lm	23 W	3000 K	Ra > 80	50.000 h	2,94 kg
003598.3000/840	3000 lm	21 W	4000 K	Ra > 80	50.000 h	2,94 kg

* Ra > 90 modules, different lumen output or wattage available on request.

* System power consumption (LED module & driver) depends on components used. Contact us for detailed information.

