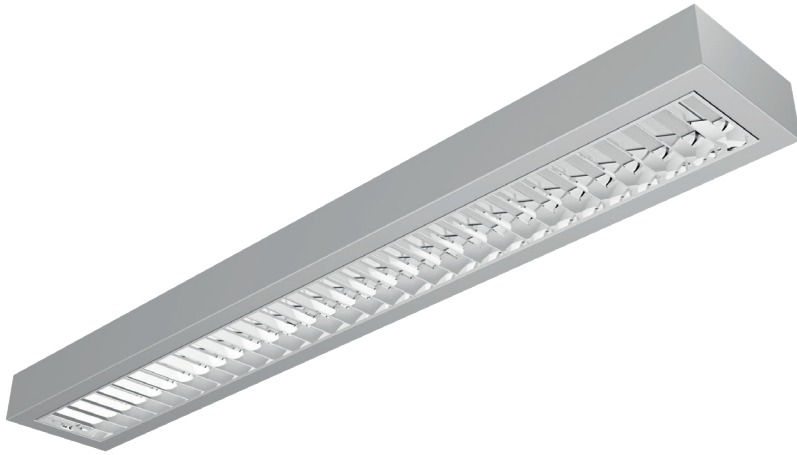


ECO PMF LED



Pendant direct or direct / indirect LED luminaire.

Mounting:	Suspended on 1,5m long steel wire suspension (with wire length control)
Body material:	Steel and aluminium
Colour:	Standard Gray 9006, other RAL colours on request (please add RAL code after index number)
LED module:	Signify (Philips), Osram, Tridonic or equivalent LED module included
Colour temperature:	3000 / 4000K, other on request
Colour Rendering Index (CRI)	>80 in standard, other on request
Driver:	Electronic driver in standard, DALI on request
Emergency unit:	On request - Standard or DALI 3 hour emergency unit
Movement sensor:	on request
Daylight control sensor:	on request
Operating temperature range:	0°C ... +40°C
IP Class:	IP20 in standard
Power:	220-240V 50/60Hz
Lighting direction:	Direct lighting - index 6522 direct / indirect lighting - index 6550.UD
Reflector type:	Aluminium glossy or mat on request
Light distribution:	Symmetric
Diffuser:	Aluminium louver with acrylic insert
General data:	5 Years standard warranty

Different lumen output or wattage available on request

All other technical features such as : Luminaire Efficacy, LOR, Lumen maintenance L/B etc. available in our pricelist

Wattage of products may vary due to constant LED efficacy improvements. Luminous flux & Luminaire Power tolerance +/- 10%.

System power consumption (LED module & driver) depends on components used

Efficacy depends on type of LED's, electronics, optics and diffuser and may differ from shown in our data pages. Most up to date information can be found in our lighting data file database.



Index no.	Net lumen output [lm]	Gross lumen output [lm]	Efficacy [lm/W]	Power [W]	Colour temp. [K]	CRI	Lifetime [H]	MacAdam [SDCM]	Weight [kg]
6522.8800/830	5500	8800	104	53	3000	Ra > 80	50.000	3	4,80
6522.8800/840	5500	8800	104	53	4000	Ra > 80	50.000	3	4,80
UP/DN									
6550.UD.13200/830	9000	13200	110	82	3000	Ra > 80	50.000	3	4,80
6550.UD.13200/840	9000	13200	110	82	4000	Ra > 80	50.000	3	4,80

