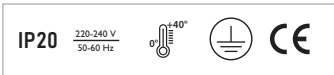


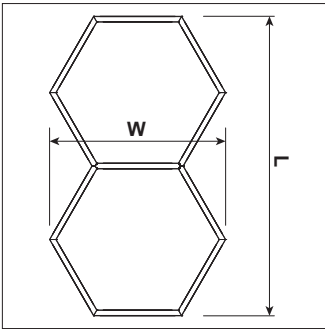
HEXA 2

Suspended direct LED luminaire.

Mounting:	Suspended on 1,5m long steel wire suspension (with wire length control)
Body material:	Aluminium profile
Colour:	Standard grey 9006, other RAL colours on request (please add RAL code after index number)
LED module:	Signify (Philips), Osram, Tridonic or equivalent LED module included
Colour temperature:	3000K or 4000K in standard, other on request
Colour Rendering Index (CRI):	>80 in standard, other on request
Diffuser:	OP (Opal), MP19 (Microprismatic with UGR<19)
Driver:	EVG/DALI on request
Emergency unit:	Standard or DALI, 3 hour emergency unit on request
Movement sensor:	On request
Daylight control sensor:	On request
Operating temperature range:	0°C ... +40°C
IP Class:	IP20 in standard, IP44 on request
Power:	220-240V 50/60Hz
Lighting direction:	Direct (direct/indirect on request)
Reflector type:	White
Light distribution:	Symmetric
General data:	5 Years standard warranty



Drawing



Energy saving MasterConnect wireless lighting control system with daylight and movement detection technology on request.



Different lumen output or wattage available on request

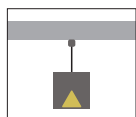
All other technical features such as: Luminaire Efficacy, LOR, Lumen maintenance L/B etc. available in our pricelist

Wattage of products may vary due to constant LED efficacy improvements. Luminous flux & Luminaire Power tolerance +/- 10%.

System power consumption (LED module & driver) depends on components used

Efficacy depends on type of LED's, electronics, optics and diffuser and may differ from shown in our data pages. Most up to date information can be found in our lighting data file database.

Available versions



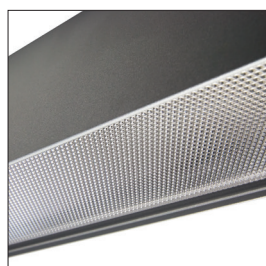
HEXA 2

Product code	Product name	Gross Lumen [lm]	Nett Lumen [lm]	Power [W]	Efficacy [lm/W]	Colour temperature [K]	Length [mm]	Width [mm]	Height [mm]	Nett Weight [kg]
Suspended luminaire, light down (suspension set included)										
10.00480.83.E.OP	HEXA 2 DN 24200 lm/830/E/OP	24200	20086	145	139	3000	2400	1200	80	19,8
10.00480.84.E.OP	HEXA 2 DN 24200 lm/840/E/OP	24200	20086	145	139	4000	2400	1200	80	19,8
10.00481.83.E.OP	HEXA 2 DN 36300 lm/830/E/OP	36300	30129	218	138	3000	3600	1800	80	28,7
10.00481.84.E.OP	HEXA 2 DN 36300 lm/840/E/OP	36300	30129	218	138	4000	3600	1800	80	29,7
10.00482.83.E.OP	HEXA 2 DN 48400 lm/830/E/OP	48400	40172	290	139	3000	4800	2400	80	38,5
10.00482.84.E.OP	HEXA 2 DN 48400 lm/840/E/OP	48400	40172	290	139	4000	4800	2400	80	38,5
10.00480.83.E.MP19	HEXA 2 DN 24200 lm/830/E/MP19	24200	20086	145	139	3000	2400	1200	80	19,8
10.00480.84.E.MP19	HEXA 2 DN 24200 lm/840/E/MP19	24200	20086	145	139	4000	2400	1200	80	19,8
10.00481.83.E.MP19	HEXA 2 DN 36300 lm/830/E/MP19	36300	30129	218	138	3000	3600	1800	80	28,7
10.00481.84.E.MP19	HEXA 2 DN 36300 lm/840/E/MP19	36300	30129	218	138	4000	3600	1800	80	29,7
10.00482.83.E.MP19	HEXA 2 DN 48400 lm/830/E/MP19	48400	40172	290	139	3000	4800	2400	80	38,5
10.00482.84.E.MP19	HEXA 2 DN 48400 lm/840/E/MP19	48400	40172	290	139	4000	4800	2400	80	38,5

Diffusers



OP (Opal)



MP19 (Microprismatic with UGR<19)