

PROFI 60 SV PREMIUM OFFICE

Surface mounted direct or suspended direct or direct / indirect LED luminaires with the latest Signify (Philips) technology - CES (Cyan Enhanced Static). Standard lengths as shown in table below, PROFI 60 SV PREMIUM OFFICE can be made to measure and connected into lighting systems according to project requirements.

Mounting:	Directly on the surface or suspended (suspension set and power cable to be ordered separately as shown below).
Body material:	Aluminium profile
Colour:	Standard Gray 9006, other RAL colours on request ( please add RAL code after index number )
LED module:	Signify (Philips) Fortimo LED Strip CES Gen5
Colour temperature:	4000K
Colour Rendering Index (CRI)	>80 in standard, other on request
Driver:	Electronic driver in standard, DALI on request
Emergency unit:	on request - Standard or DALI 3 hour emergency unit
Movement sensor:	On request
Daylight control sensor:	On request
Operating temperature range:	0°C ... +40°C
IP Class:	IP20
Power:	220-240V 50/60Hz
Lighting direction:	Direct or direct / indirect
Reflector type:	Parabolic louver
Light distribution:	Symmetric
Diffuser:	[PL] Parabolic louver in standard [WD] white opalic or [MPR] Microprismatic UGR<19, on request
General data:	5 Years standard warranty

UGR <19 diffuser on request

Luminaires can be connected into long lighting lines

Different lumen output or wattage available on request

All other technical features such as: Luminaire Efficacy, LOR, Lumen maintenance L/B etc. available in our pricelist

Wattage of products may vary due to constant LED efficacy improvements. Luminous flux & Luminaire Power tolerance +/- 10%.

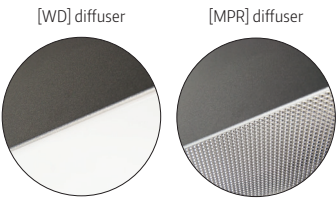
System power consumption (LED module & driver) depends on components used

Efficacy depends on type of LED's, electronics, optics and diffuser and may differ from shown in our data pages. Most up to date information can be found in our lighting data file database.

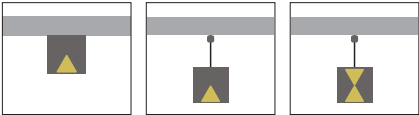


Product is also available with Philips EasyAir (SR) sensor technology.

Available diffusers:



Available versions



Accessories



7600.15

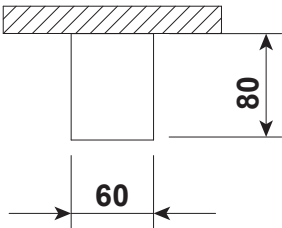


6564.15



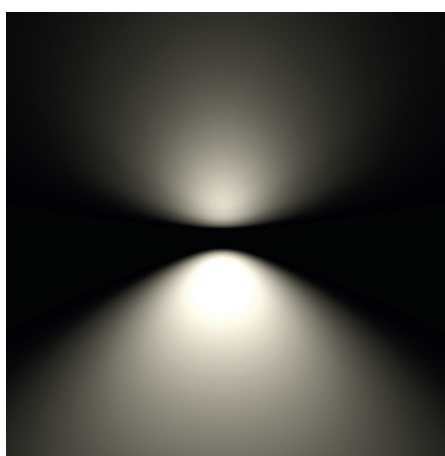
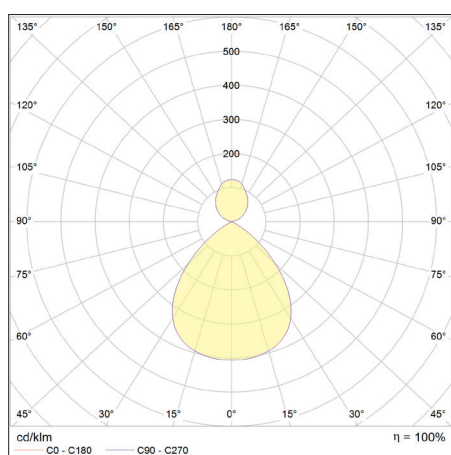
7603.15

Index no.	Steel wire suspension
7600.15	single 1,5 m long suspension set for PROFI SV series luminaire - 2 pcs. per standalone luminaire needed or in linear systems 1 piece for every 2 meters of continuous PROFI SV lighting line
6564.15	1,5 m long 3 core transparent power cable with ceiling base and terminal block
7603.15	1,5 m long 5 core transparent power cable with ceiling base and terminal block



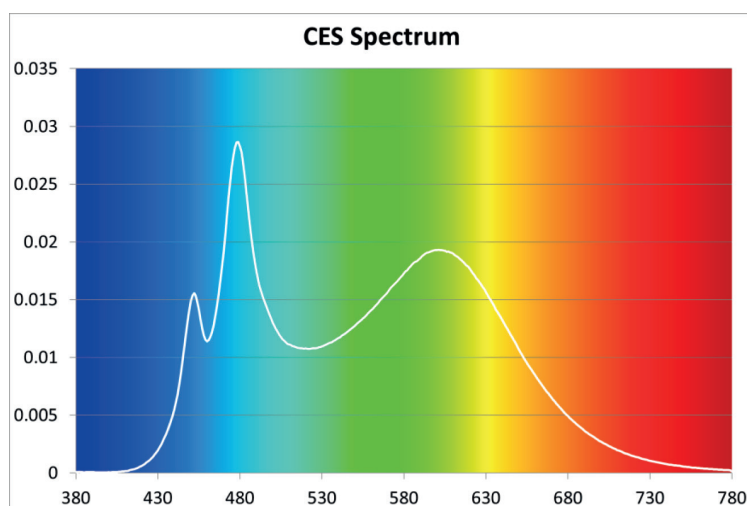


Index no.	Net lumen output [lm]	Gross lumen output [lm]	Efficacy [lm/W]	Power [W]	Colour temp. [K]	CRI	Lifetime [H]	MacAdam [SDCM]	Length [mm]	Weight [kg]
<b>SURF DN (PND DN)</b>										
7662.CES.5500/830	4100	5500	121	34	3000	Ra > 80	50.000	3	1430	3,50
7662.CES.5500/840	4100	5500	121	34	4000	Ra > 80	50.000	3	1430	3,50
7663.CES.11000/830	8200	11000	121	68	3000	Ra > 80	50.000	3	2830	7,00
7663.CES.11000/840	8200	11000	121	68	4000	Ra > 80	50.000	3	2830	7,00
<b>PND UP/DN</b>										
7664.CES.8800/830	6000	8800	109	55	3000	Ra > 80	50.000	3	1430	3,50
7664.CES.8800/840	6000	8800	109	55	4000	Ra > 80	50.000	3	1430	3,50
7665.CES.17600/830	12000	17600	109	110	3000	Ra > 80	50.000	3	2830	7,00
7665.CES.17600/840	12000	17600	109	110	4000	Ra > 80	50.000	3	2830	7,00



### PHILIPS Fortimo LED Strip CES Gen5 (Cyan Enhanced Static):

New Philips Fortimo LED Strip CES system is a breakthrough solution towards meeting HCL WELL standards. This is possible due to the specific effect of this type of light on the circadian rhythm. In 2002, the third receptor in the eye, IpRGC, was found to be responsible for the proper level of melatonin in the human body. The associated term is MDER (Melanopic Daylight Equivalent Ratio). If we assume that sunlight during the day provides us with a factor of 100 and the average light in standard office with 500 lux intensity only 50 of this factor, our lighting systems with innovative CES Fortimo Strip LED boards allows to achieve unique value of 86.



### Fortimo CES / PO features and benefits:

- It is part of the Human Centric Lighting trend and
- allows you to earn 4 WELL standard points
- The use of a unique LED chip configuration
- The ideal "admixture" of 480nm wavelength
- The highest MDER on the market
- Photobiological safety guaranteed
- Luminous efficacy up to 165 lm/W
- 5 years warranty ,
- No "ripple" effect, ripple current <4