

PROFI TEC LED SR

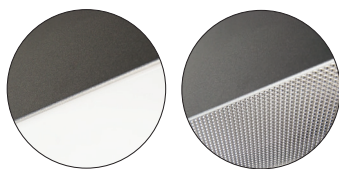


Luminaire is equipped with EasyAir Sensor:
Communication between luminaires without wires
Easy smartphone commissioning
Enables gateway data readout
Xitanium SR interface (based on DALI 2.0)

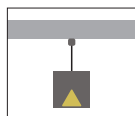
Available diffusers:

[WD] diffuser

[MPR] diffuser



Available versions



Index no.	Net lumen output [lm]	Gross lumen output [lm]	Efficacy [lm/W]	Power [W]	Colour temp. [K]	CRI	Lifetime [H]	MacAdam [SDCM]	Length [mm]	Weight [kg]
6351.SR.4400/830/WD	3000	4400	107	28	3000	Ra > 80	50.000	3	1250	3,20
6351.SR.4400/840/WD	3000	4400	107	28	4000	Ra > 80	50.000	3	1250	3,20
6351.SR.5500/830/WD	3900	5500	111	35	3000	Ra > 80	50.000	3	1530	4,20
6351.SR.5500/840/WD	3900	5500	111	35	4000	Ra > 80	50.000	3	1530	4,20

Suspended direct lighting LED luminaire with Philips LED modules, Xitanium SR Dali 2.0 standard driver and EasyAir sensor. Can be made to measure or connected into lighting systems according to project requirements.

Mounting:	Suspendand on 1,5 long wire suspension
Body material:	Aluminium profile
Colour:	Standard Gray 9006, other RAL colours on request (please add RAL code after index number)
LED module:	Signify (Philips) or equivalent LED module included
Colour temperature:	3000K or 4000K in standard, other on request
Colour Rendering Index (CRI)	>80 in standard, other on request
Driver:	Xitanium SR
Emergency unit:	on request - Standard or DALI 3 hour emergency unit
Movement sensor:	EasyAir sensor included
Daylight control sensor:	EasyAir sensor included
Operating temperature range:	0°C ... +40°C
IP Class:	IP20 in standard, IP44 on request
Power:	220-240V 50/60Hz
Lighting direction:	Direct in standard, direct / indirect on request
Reflector type:	Aluminium white
Light distribution:	Symmetric
Diffuser:	[WD] white opac in standard, Microprismatic [MPR] on request
General data:	5 Years standard warranty

UGR <19 diffuser on request

Luminaires can be connected into long lighting lines

Different lumen output or wattage available on request

All other technical features such as: Luminaire Efficacy, LOR, Lumen maintenance L/B etc. available in our pricelist

Wattage of products may vary due to constant LED efficacy improvements. Luminous flux & Luminaire Power tolerance +/- 10%.

System power consumption (LED module & driver) depends on components used

Efficy depends on type of LED's, electronics, optics and diffuser and may differ from shown in our data pages. Most up to date information can be found in our lighting data file database.

