

# PROLINE 60 TW

Surface mounted or suspended Tunable White LED luminaire. All accessories such as end caps, suspension wires or power cables should be ordered separately. Bespoke lengths of lighting lines available on request.

<b>Mounting:</b>	Directly on the surface or suspended
<b>Body material:</b>	Aluminium profile
<b>Colour:</b>	Standard White RAL 9016, other RAL colours on request (please add RAL colour after index number)
<b>LED module:</b>	Signify (Philips), Osram, Tridonic or equivalent LED module included
<b>Colour temperature:</b>	2700-6500K
<b>Colour Rendering Index (CRI):</b>	>80 in standard, other on request
<b>Diffuser:</b>	OP (Opal), MP19 (Microprismatic with UGR<19)
<b>Driver:</b>	DALI DT8 driver
<b>Emergency unit:</b>	On request
<b>Movement sensor:</b>	on request
<b>Daylight control sensor:</b>	on request
<b>Operating temperature range:</b>	0°C ... +40°C
<b>IP Class:</b>	IP20 in standard, IP44 on request
<b>Power:</b>	220-240V 50/60Hz
<b>Lighting direction:</b>	Direct (direct/indirect on request)
<b>Reflector type:</b>	White
<b>Light distribution:</b>	Symmetric
<b>General data:</b>	5 Years standard warranty

Different lumen output or wattage available on request

All other technical features such as: Luminaire Efficacy, LOR, Lumen maintenance L/B etc. available in our pricelist

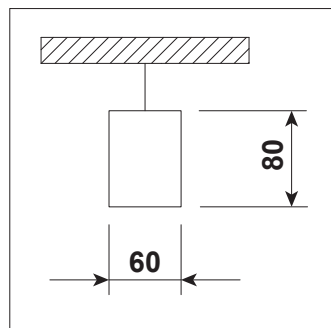
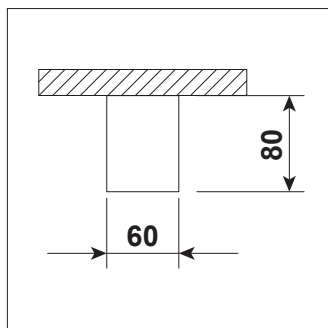
Wattage of products may vary due to constant LED efficacy improvements. Luminous flux & Luminaire Power tolerance +/- 10%.

System power consumption (LED module & driver) depends on components used

Efficacy depends on type of LED's, electronics, optics and diffuser and may differ from shown in our data pages. Most up to date information can be found in our lighting data file database.



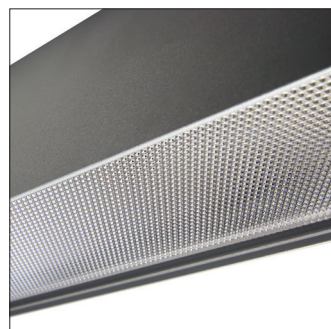
## Drawing



## Diffusers



OP (Opal)



MP19 (Microprismatic with UGR<19)



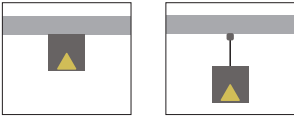
**Energy saving EasyAir daylight and movement detection technology on request**



**Energy saving MasterConnect wireless lighting control system with daylight and movement detection technology on request.**



Available versions



PROLINE 60 TW

Product code	Product name	Gross Lumen [lm]	Nett Lumen [lm]	Power [W]	Efficacy [lm/W]	Colour temperature [K]	Length [mm]	Width [mm]	Height [mm]	Nett Weight [kg]
PROFILE Type S DN single bar, light down, mounting directly to the ceiling or suspended (suspension set and end caps to be ordered separately)										
10.02000.TW.DT8.OP	PROLINE 60 TW S DN/2200lm/TW/DT8/OP	2200	1826	14	130	2700-6500	581	60	80	1,9
10.02010.TW.DT8.OP	PROLINE 60 TW S DN/4400lm/TW/DT8/OP	4400	3652	26	140	2700-6500	1143	60	80	2,9
10.02000.TW.DT8.MP19	PROLINE 60 TW S DN/2200lm/TW/DT8/MP19	2150	1785	14	128	2700-6500	581	60	80	1,9
10.02010.TW.DT8.MP19	PROLINE 60 TW S DN/4400lm/TW/DT8/MP19	4300	3570	26	137	2700-6500	1143	60	80	2,9

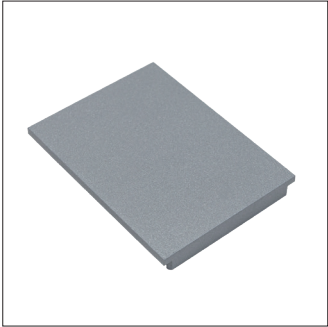
Product code	Product name
Accessories	
90.00106.15	Suspension for PROLINE 60 - steel wire 1,5 m long (1 piece)
90.00102.15	Transparent 5 core 1,5 long power cable, ceiling cup included
90.00114	End cap for PROLINE 60 (1 piece)



Suspension set for PROLINE 60 - steel wire 1,5 m



5 core transparent power feed, 1,5 m including ceiling base



End cap for PROLINE 60 (1 piece)