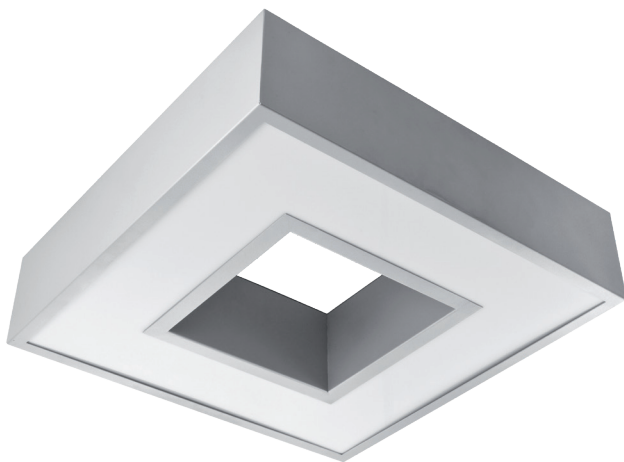


SPUTNIK LED LINE



Pendant LED luminaire.

- Mounting:** Suspended on 1,5m long steel wire suspension (with wire length control)
- Body material:** Steel and aluminium
- Colour:** Standard Gray 9006, other RAL colours on request (please add RAL code after index number)
- LED module:** Signify (Philips), Osram, Tridonic or equivalent LED module included
- Colour temperature:** 3000 / 4000K, other on request
- Colour Rendering Index (CRI):** >80 in standard other on request
- Driver:** Electronic driver in standard, DALI on request
- Emergency unit:** On request - Standard or DALI 3 hour emergency unit
- Movement sensor:** on request
- Daylight control sensor:** on request
- Operating temperature range:** 0°C ... +40°C
- IP Class:** IP20 in standard, IP44 on request
- Power:** 220-240V 50/60Hz
- Lighting direction:** Direct lighting
- Reflector type:** Aluminium white
- Light distribution:** Symmetric
- Diffuser:** [WD] white opalic in standard, Microprismatic [MPR] on request
- General data:** 5 Years standard warranty

Different lumen output or wattage available on request

All other technical features such as : Luminaire Efficacy, LOR, Lumen maintenance L/B etc. available in our pricelist

Wattage of products may vary due to constant LED efficacy improvements. Luminous flux & Luminaire Power tolerance +/- 10%.

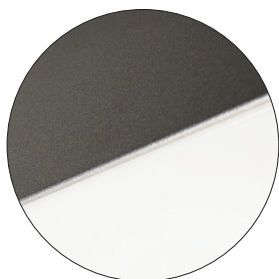
System power consumption (LED module & driver) depends on components used

Efficacy depends on type of LED's, electronics, optics and diffusor and may differ from shown in our data pages. Most up to date information can be found in our lighting data file database.



Index no.	Net lumen output [lm]	Gross lumen output [lm]	Efficacy [lm/W]	Power [W]	Colour temp. [K]	CRI	Lifetime [H]	MacAdam [SDCM]	Weight [kg]
3510.8800/830	5300	8800	100	53	3000	Ra > 80	50.000	3	10,00
3510.8800/840	5300	8800	100	53	4000	Ra > 80	50.000	3	10,00

[WD] diffuser



[MPR] diffuser

