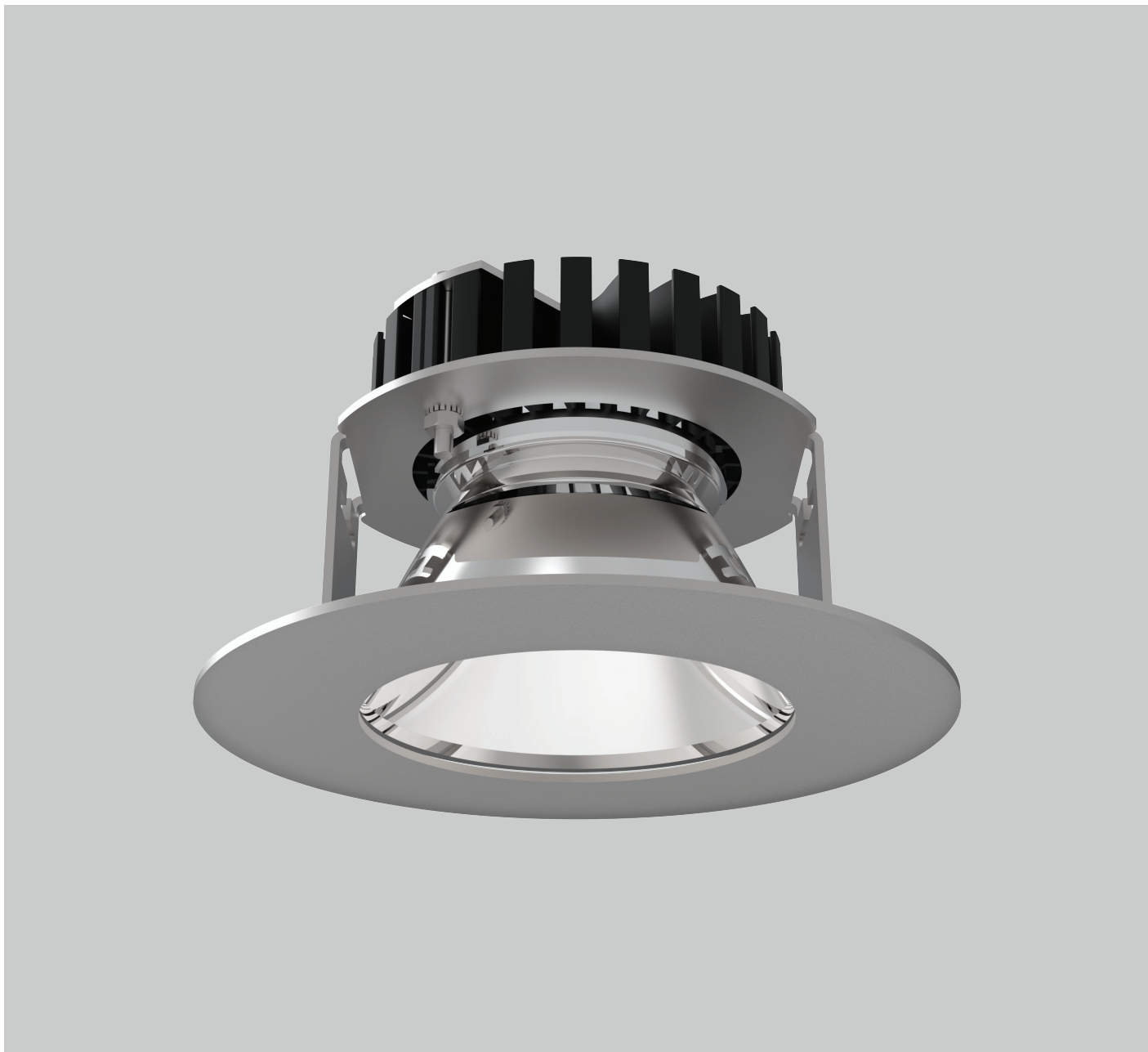


DS 120



Round recessed downlight. Top quality COB LED module with colour consistency MacAdams ≤ 3 , extensive portfolio of lumen ranges, CCTs and spectra. Variety of drivers: standard EVG on/off, DALI and wireless controlled as MasterConnect or Casambi on request. Remote, wireless occupancy & daylight sensor available to allow significant energy savings and wireless connectivity. Mounting without tools into any type of suspended ceiling. Body is made of aluminium and steel. Standard colour RAL 9003M any other colour from basic RAL range available at no extra cost. Selection of beam angles, lumen outputs and drivers allows to use this luminaire in different types of lighting projects.

Luminous flux & Luminaire Power tolerance up to 10%. System power consumption depends on components used. Luminous efficacy depends on type of LED's, electronics, optics and diffuser. The most up to date technical parameters can be found on our website and in database of LDT files.

Lighting direction:



PDF datasheet:



DS 120

Mounting:	Recessed mounting
Body material:	Steel and aluminium
Colour:	Standard white RAL 9003M, other RAL colours on request
Lumen output:	Standard up to 3000 lm, any other on request
LED module:	Signify (Philips), Tridonic or equivalent COB LED module
Colour temperature:	2700/3000/4000K/2700-6500K TW, other on request
Colour Rendering:	CRI>80 in standard, other on request
Driver:	EVG on-off/DALI/MC (MasterConnect)/Casambi, other on request
Wireless control:	Philips MasterConnect / Casambi, other on request
Daylight/Occupancy sensor:	Wireless ICS sensor
Emergency unit:	N/A
Operating temperature range:	0°C ... +35°C
IP Class:	IP44/20 in standard
Power:	220-240V 50/60Hz
Lighting direction:	Direct
Light distribution:	Symmetric
Optics:	Reflector
Beam angle:	16°, 24°, 36°, 54°
Diffusor:	CG clear glass
Warranty:	5 Years standard warranty

DS 120 recessed mounted, light down

All current index numbers, lumen outputs, power consumption and many other technical information are available in our 2024 pricelist. Details on wireless lighting control systems on page number 896.



Energy saving MasterConnect wireless lighting control system with daylight and movement detection technology on request.



Zigbee



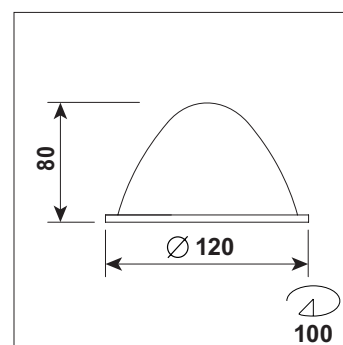
Bluetooth



ICS wireless daylight&occ sensor



ICSW wireless switch



Basic dimensions



DS 120

Product code	Product name	Gross Lumen [lm]	Nett Lumen [lm]	Power [W]	Efficacy [lm/W]	Colour temperature [K]	Optics	Diameter [mm]	Height [mm]	Nett Weight [kg]
40.02065.83.E.16.CAC	DS 120 / 1300lm / 830 / E / 16 / CG	1300	1196	8	150	3000	16°	Ø 100	100	0,7
40.02065.83.E.24.CAC	DS 120 / 1300lm / 830 / E / 24 / CG	1300	1196	8	150	3000	24°	Ø 100	100	0,7
40.02065.83.E.36.CAC	DS 120 / 1300lm / 830 / E / 36 / CG	1300	1196	8	150	3000	36°	Ø 100	100	0,7
40.02065.83.E.54.CAC	DS 120 / 1300lm / 830 / E / 54 / CG	1300	1196	8	150	3000	54°	Ø 100	100	0,7
40.02065.84.E.16.CAC	DS 120 / 1300lm / 840 / E / 16 / CG	1300	1196	8	150	4000	16°	Ø 100	100	0,7
40.02065.84.E.24.CAC	DS 120 / 1300lm / 840 / E / 24 / CG	1300	1196	8	150	4000	24°	Ø 100	100	0,7
40.02065.84.E.36.CAC	DS 120 / 1300lm / 840 / E / 36 / CG	1300	1196	8	150	4000	36°	Ø 100	100	0,7
40.02065.84.E.54.CAC	DS 120 / 1300lm / 840 / E / 54 / CG	1300	1196	8	150	4000	54°	Ø 100	100	0,7
40.02066.83.E.16.CAC	DS 120 / 2000lm / 830 / E / 16 / CG	2000	1840	12	153	3000	16°	Ø 100	100	0,7
40.02066.83.E.24.CAC	DS 120 / 2000lm / 830 / E / 24 / CG	2000	1840	12	153	3000	24°	Ø 100	100	0,7
40.02066.83.E.36.CAC	DS 120 / 2000lm / 830 / E / 36 / CG	2000	1840	12	153	3000	36°	Ø 100	100	0,7
40.02066.83.E.54.CAC	DS 120 / 2000lm / 830 / E / 54 / CG	2000	1840	12	153	3000	54°	Ø 100	100	0,7
40.02066.84.E.16.CAC	DS 120 / 2000lm / 840 / E / 16 / CG	2000	1840	12	153	4000	16°	Ø 100	100	0,7
40.02066.84.E.24.CAC	DS 120 / 2000lm / 840 / E / 24 / CG	2000	1840	12	153	4000	24°	Ø 100	100	0,7
40.02066.84.E.36.CAC	DS 120 / 2000lm / 840 / E / 36 / CG	2000	1840	12	153	4000	36°	Ø 100	100	0,7
40.02066.84.E.54.CAC	DS 120 / 2000lm / 840 / E / 54 / CG	2000	1840	12	153	4000	54°	Ø 100	100	0,7
40.02067.83.E.16.CAC	DS 120 / 3000lm / 830 / E / 16 / CG	3000	2760	20	138	3000	16°	Ø 100	100	0,7
40.02067.83.E.24.CAC	DS 120 / 3000lm / 830 / E / 24 / CG	3000	2760	20	138	3000	24°	Ø 100	100	0,7
40.02067.83.E.36.CAC	DS 120 / 3000lm / 830 / E / 36 / CG	3000	2760	20	138	3000	36°	Ø 100	100	0,7
40.02067.83.E.54.CAC	DS 120 / 3000lm / 830 / E / 54 / CG	3000	2760	20	138	3000	54°	Ø 100	100	0,7
40.02067.84.E.16.CAC	DS 120 / 3000lm / 840 / E / 16 / CG	3000	2760	20	138	4000	16°	Ø 100	100	0,7
40.02067.84.E.24.CAC	DS 120 / 3000lm / 840 / E / 24 / CG	3000	2760	20	138	4000	24°	Ø 100	100	0,7
40.02067.84.E.36.CAC	DS 120 / 3000lm / 840 / E / 36 / CG	3000	2760	20	138	4000	36°	Ø 100	100	0,7
40.02067.84.E.54.CAC	DS 120 / 3000lm / 840 / E / 54 / CG	3000	2760	20	138	4000	54°	Ø 100	100	0,7