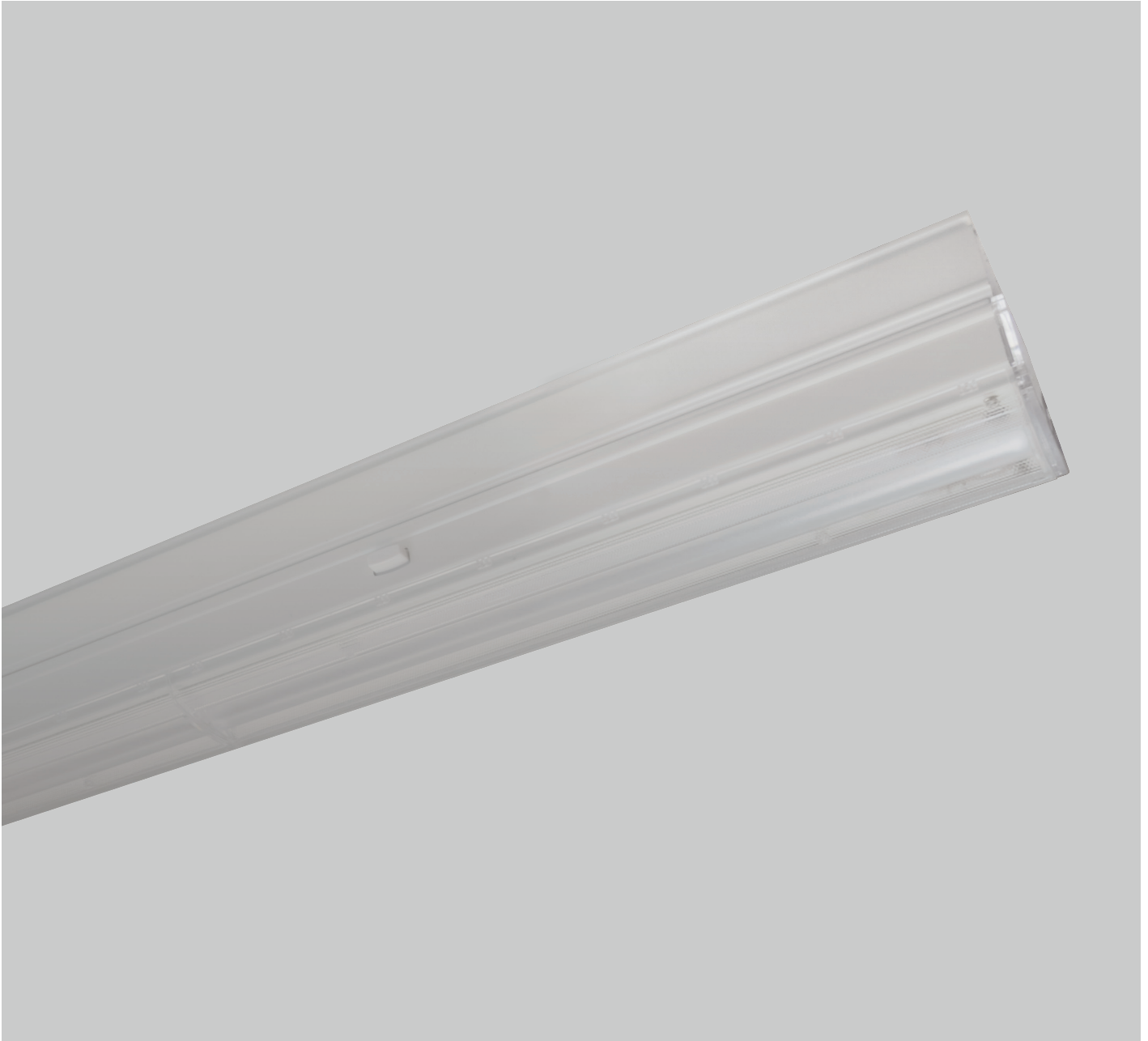


TRUNKI



Linear trunking system with high quality lens optics. Top quality SMD LED modules with colour consistency MacAdams 3, extensive portfolio of lumen ranges, CCTs and spectra. Variety of drivers: standard EVG on/off, DALI on request. Remote, wireless occupancy & daylight sensor available to allow significant energy savings and wireless connectivity. Mounting directly on any type of ceiling or suspended. Body is made of steel and aluminium. Standard colour RAL 9003M, other colours on request. Variety of beam angles, lumen outputs and drivers allows to use this luminaire in different types of lighting projects. Luminous flux & Luminaire Power tolerance up to 10%. System power consumption depends on components used. Luminous efficacy depends on type of LED's, electronics, optics and diffusor. The most up to date technical parameters can be found on our website and in database of LDT files.

Lighting direction



PDF datasheet:



TRUNKI

Mounting:	Surface mounted/suspended
Body material:	Steel and aluminium
Colour:	Standard white RAL 9003, other RAL colours on request
Lumen output:	Standard up to 11.200 lm / 1500 mm long unit, any other on request
LED module:	Signify (Philips), Tridonic or equivalent SMD LED module
Colour temperature:	3000/4000/5000/6500K, other on request
Colour Rendering:	CRI>80 in standard, other on request
Driver:	EVG on-off, DALI, other on request
Wireless control:	Philips MasterConnect on request
Daylight/Occupancy sensor:	Wireless MCS or MCS IP65 sensor, other on request
Emergency unit:	On request
Operating temperature range:	0°C ... +35°C
IP Class:	IP20 in standard
Power:	220-240V 50/60Hz
Lighting direction:	Direct lighting
Light distribution:	Symmetric
Optics:	Lens/diffusor
Beam angle:	30°/60°/90°/120°/ASY - asymmetrical/DBASY - double asymmetrical
Diffuser:	Clear/diffused PMMA
Warranty:	5 Years standard warranty

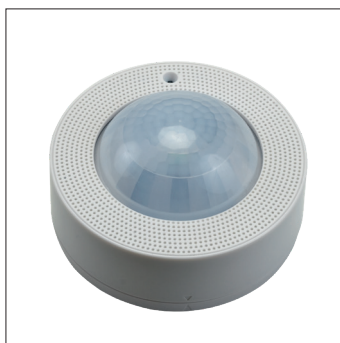
TRUNKI surface mounted luminaire

TRUNKI PND surface mounted luminaire

All current index numbers, lumen outputs, power consumption and many other technical information are available in our 2024 pricelist. Details on wireless lighting control systems on page number 896.



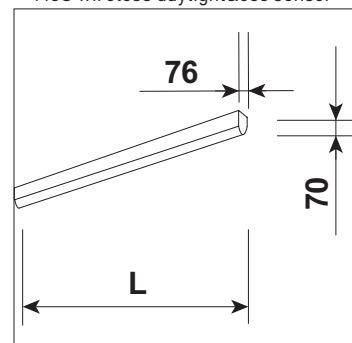
MCS wireless daylight&occ sensor



MCS IP65 wireless daylight&occ sensor



XCS wireless switch



Basic dimensions