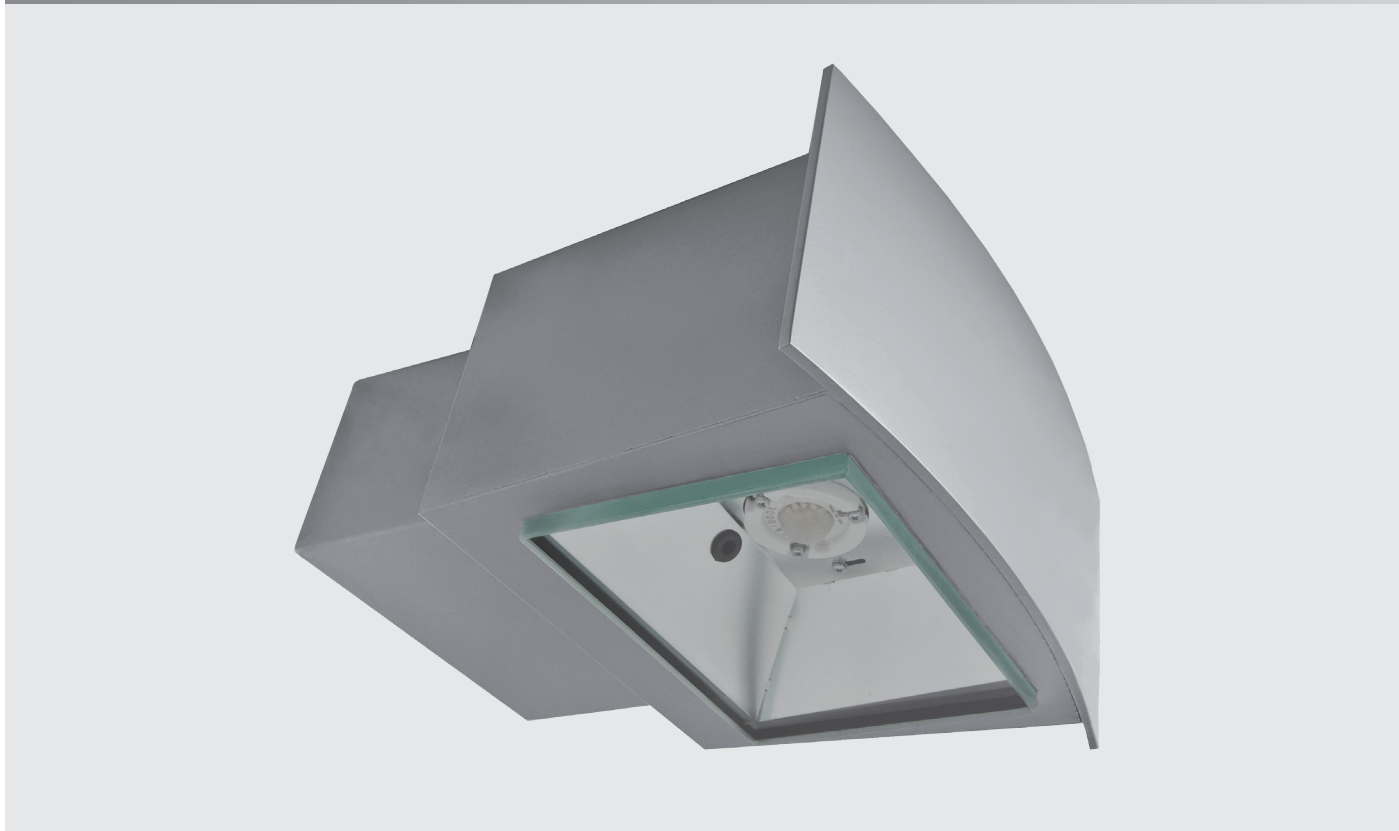
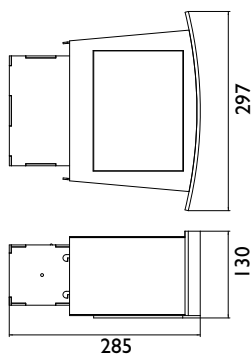


# STATWALL LED SLM



Wall mounted outdoor LED luminaire. Body is made of stainless steel and aluminum and it is available in all RAL colours. Light source - Philips, Osram or Tridonic LED module. Standard EVG ballast.



Index no.	Lumen output	Wattage	Colour temp.	Colour rendering index	Lifetime	Weight
003667.1100/827	1100 lm	9 W	2700 K	Ra > 80	50,000 h	5,16 kg
003667.1100/830	1100 lm	9 W	3000 K	Ra > 80	50,000 h	5,16 kg
003667.1100/840	1100 lm	8 W	4000 K	Ra > 80	50,000 h	5,16 kg
003667.2000/827	2000 lm	16 W	2700 K	Ra > 80	50,000 h	5,16 kg
003667.2000/830	2000 lm	15 W	3000 K	Ra > 80	50,000 h	5,16 kg
003667.2000/840	2000 lm	14 W	4000 K	Ra > 80	50,000 h	5,16 kg
003667.3000/827	3000 lm	24 W	2700 K	Ra > 80	50,000 h	5,16 kg
003667.3000/830	3000 lm	23 W	3000 K	Ra > 80	50,000 h	5,16 kg
003667.3000/840	3000 lm	21 W	4000 K	Ra > 80	50,000 h	5,16 kg

\* Ra > 90 modules, different lumen output or wattage available on request.

\* System power consumption (LED module & driver) depends on components used. Contact us for detailed information.

